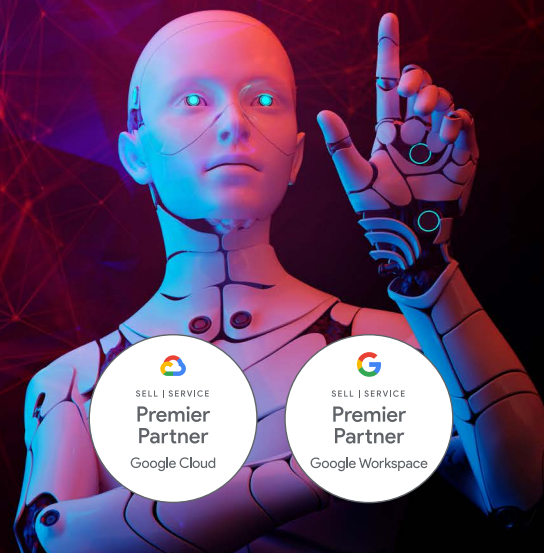


# Gemini Enterprise Kickstart Implementation



## Challenge

Businesses can now harness the power of Google Cloud's enterprise-ready AI agents with Gemini Enterprise and NotebookLM Enterprise. This tool unlocks hidden insights within existing data, making it actionable. However, successful implementation requires expertise. The initial setup, critical for the system to function optimally, involves configuring Data Stores, Actions, and App individualization. To maximize the benefits and become an early adopter of Gemini Enterprise a skilled implementer who understands the dependencies and inner workings of how AI-Agents and -applications work.

## Solution

Unlocking Gemini Enterprise potential is key for data-driven businesses. SoftwareOne empowers you to seamlessly integrate this powerful tool. Our certified experts provide tailored consulting, designing your Gemini Enterprise strategy from data store configuration and action definition to app individualization. Whether you're starting fresh or have an existing Google Cloud environment, we ensure smooth integration, maximizing ROI. We handle the complexities, so you gain actionable insights and intelligent automation.

## Outcome

### Accelerated Gemini Enterprise Adoption & Actionable Insights

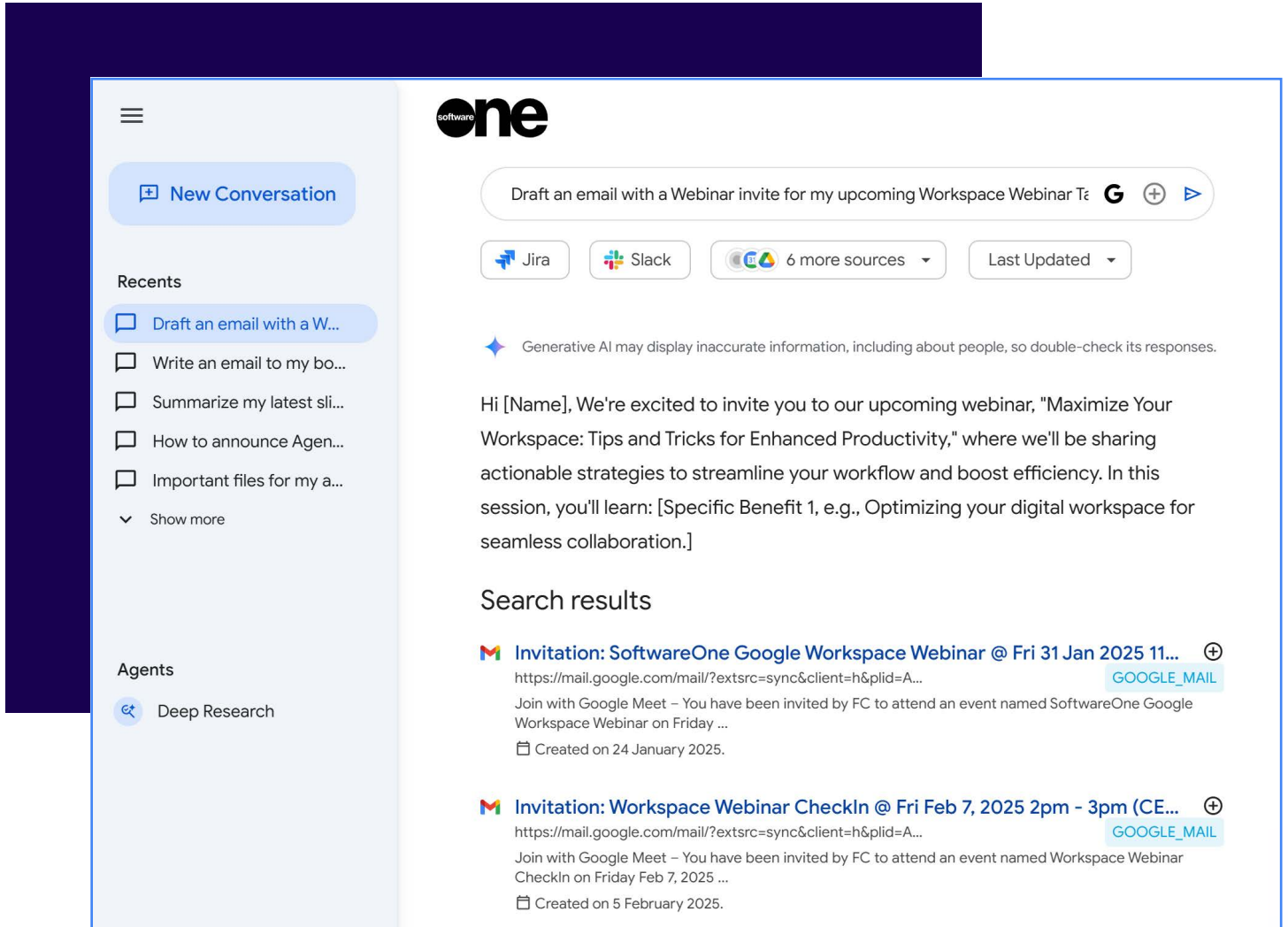
**Enablement for everyone:** We offer workshops and ask-me-anything sessions to share our expertise. These sessions range from general knowledge on enterprise search to technical topics such as Workforce Identity Federation and Agent Tuning.

**Data Value Discovery:** In order to optimize your Gemini Enterprise implementation and ensure that you get the most out of it, we will collaborate to evaluate your current tool and service usage and identify the appropriate data sources for your implementation.

**Dedicated Gemini Enterprise Implementation:** We will set up your own Gemini Enterprise instance, including Authentication, Data Stores, Actions, and Agents. Then, we'll collaborate to fine-tune your instance and explore optimization strategies to enhance its performance. We won't simply observe and guide you; we'll actively work to implement the initial setup complexities, so you gain actionable insights and intelligent automation.

# What is Gemini Enterprise?

Gemini Enterprise is an AI-powered platform that acts as a centralized hub for all your enterprise data and applications. It leverages Google's advanced AI capabilities, including Gemini, Imagen, and Veo models, to offer a range of features that transform how employees interact with information and complete tasks.



## Why choose SoftwareOne?

- **Google Cloud Premier Partner** with 250+ certified consultants
- **End-to-end approach** as one partner for your Google Cloud services
- Proven track of record of successful **Data & AI implementations**

## CONTACT US TODAY

Find out more at

[www.softwareone.com](http://www.softwareone.com)

DE

T. +49 341 2568 000  
E. [info.de@softwareone.com](mailto:info.de@softwareone.com)

AT

T. +43 1 878 10 0  
E. [info.at@softwareone.com](mailto:info.at@softwareone.com)

CH

T. +41 844 44 55 44  
E. [info.ch@softwareone.com](mailto:info.ch@softwareone.com)



Copyright © 2025 by SoftwareOne AG, Riedenmatt 4, CH-6370 Stans. All rights reserved. SoftwareOne is a registered trademark of SoftwareOne AG. All other trademarks are the property of their respective owners. SoftwareOne shall not be liable for any error in this document. Liability for damages directly and indirectly associated with the supply or use of this document is excluded as far as legally permissible.  
© Imagery by: Adobe Stock and Getty Images.