

**SoftwareOne**  
**AI Kickstart**  
**27,900.00 CHF/**  
**net\***



## Take your AI journey to the next level

# AI solutions from idea to pilot application

Artificial intelligence has never been more accessible. You can start supporting your business with little effort using Microsoft Azure services such as OpenAI Service, Cognitive Services, or Azure Databricks. This allows you to take advantage of the latest technologies and developments in artificial intelligence to get more out of your business.

The AI Kickstart approach involves analysing your challenges, existing data and infrastructure solutions, developing solutions and delivering tailored pilot applications. We review and adapt the development in a solution-oriented way, in addition to regular feedback cycles for rapid exchange.

The AI Kickstart is divided into 4 phases:

### Planning

- Azure infrastructure planning (new or existing)
- Data connectivity planning (inbound / outbound)
- Review of existing approaches (data models, AI use case)
- Requirements/dimensioning: time, data volume, etc.
- Collaboration requirements: access rights, procedures, knowledge transfer, documentation

**2**

### Adoption

- Development of initial AI solutions
- Guidance on working with the new AI environment and support with any necessary customisations
- Planning and implementation of additional use cases
- Checking and optimising the AI environment

**4**

**1**

### Initialisation

- Coordination meetings
- Scoping
- Existing ideas and concepts
- Documentation
- Handover / planning

**3**

### Foundation

- Deployment/Integration of:
  - Azure OpenAI Services
  - Azure Applied AI Services
  - Azure ML Services
  - Data Storage
  - Data transfer pipelines
- Data link creation
- Process automation (scripting)
- Handover to client's IT team

# The assessment work packages in detail:

## Service features

The AI Kickstart offers the opportunity to start an AI project using the latest Microsoft Azure services and to build a solution in the environment of your choice using standard components. This model is based on the proven agile project approach of SoftwareOne. There are four successive phases to the AI Kickstart:

1. Initialisation
2. Planning
3. Building the baseline (Foundation)
4. Adoption

and is supported by end-to-end project management.

## Costs\*

The cost of an AI Kickstart, including evaluation, analysis and implementation of a pilot or PoC, is €24,900 net.

### Phase 1 **Initialisation**

There are both technical and organisational objectives in the initialisation of the Kickstart project. The project topic and its scope are defined (scoping) on a technical level. This process incorporates your existing ideas and concepts as well as SoftwareOne's expertise. This technical aspect, where the scope and complexity of the topic is carefully adapted to the planned project timeframe, already provides added value as part of the Kickstart project.

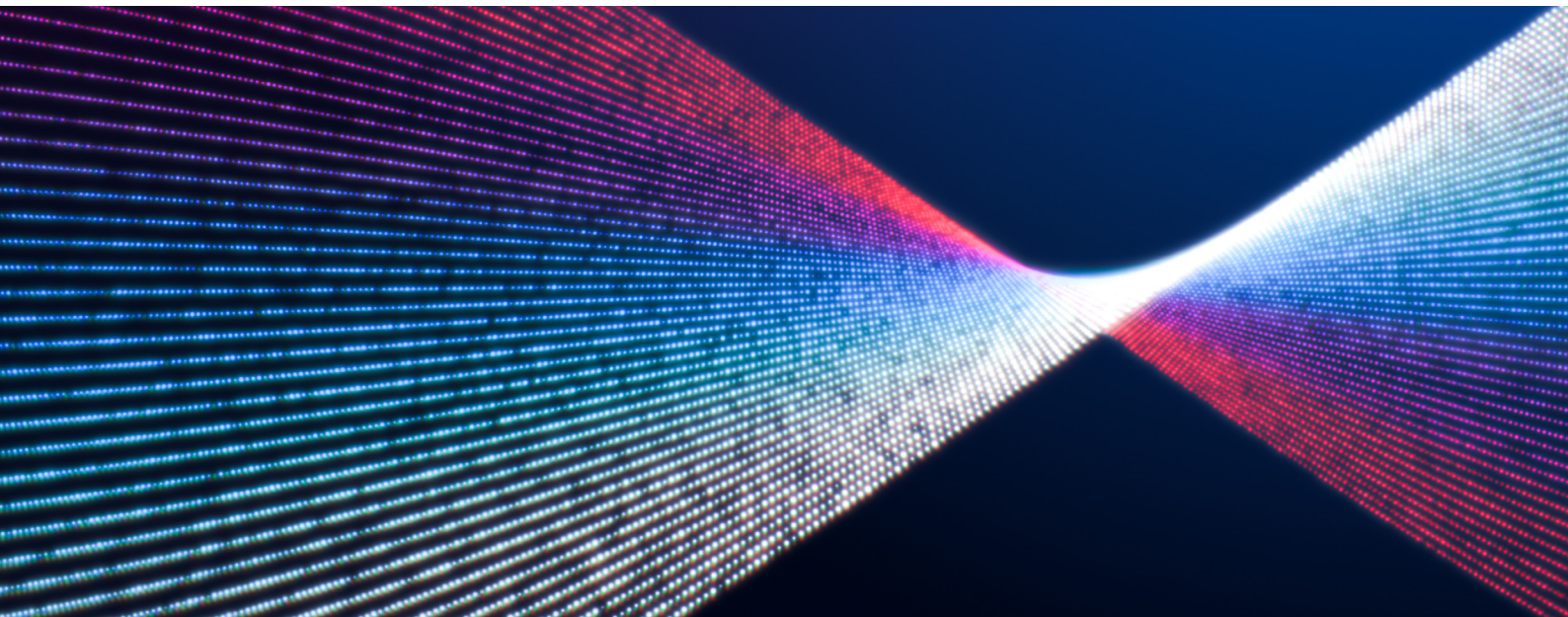
At an organisational level, regular meetings will be held for the purpose of agreement, coordination and monitoring of the project's progress. In addition, a project management and control system is in place to ensure that the scope and

complexity of the project is carefully tailored to the planned timeframe for the project. To ensure the smooth implementation and billing of the project, a project management and controlling system is set up.

The Initialisation results in a written document that describes

- the subject matter and scope of the project
- all required persons
- and all necessary parameters.

This documentation is available to both the customer and SoftwareOne. It forms the basis for the planning phase of the project.



## 2

### Phase 2

## Planning

The planning stage is aimed at providing the best possible preparation for the implementation stage, focusing on the following areas:

- **Design of the Azure infrastructure**, i.e. Azure resources and their connections to each other
- **Planning the data connections** between external source/target systems and the AI solution
- **Consideration and evaluation of any existing data models and standardised Azure AI services**, e.g. Open AI, Cognitive Services, Applied AI Services, ML (Machine Learning)
- **Evaluate solution sizing** in terms of size/performance of Azure resources, processing times, data volumes, etc.

- **Identify and set up necessary access** to source and target systems and the Azure platform; customer involvement required
- **Knowledge transfer** through workshops and documentation

The planning phase also includes parts of requirements engineering, in particular requirements elicitation and analysis within the defined project topic and scope. The various requirements are prioritised to ensure maximum benefit and design of the solution to be created.

## 3

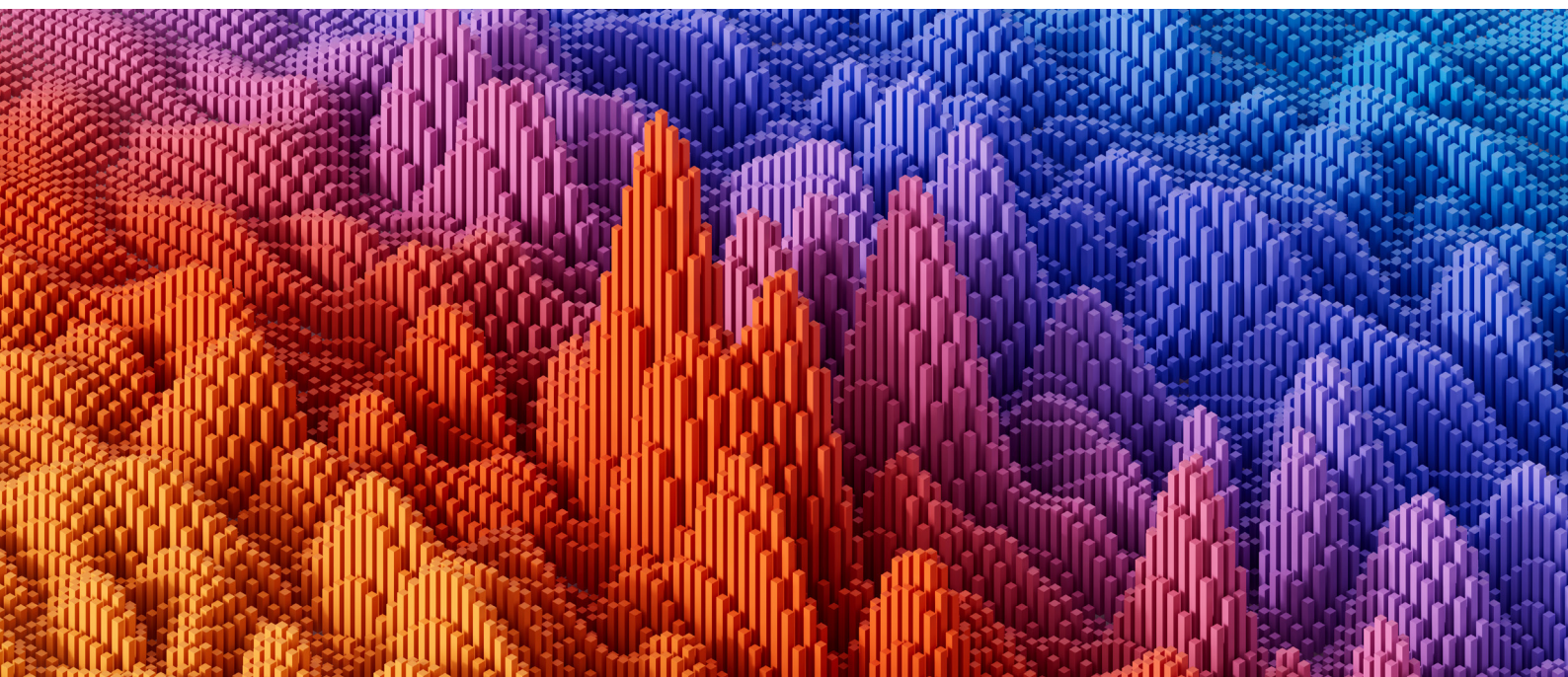
### Phase 3

## Foundation

In this phase, the previously planned components are implemented. The technical components of the AI solution are created and linked together. The standard components of the Kickstart solution are:

- Azure Cognitive Services
- Azure Applied AI Services
- Azure ML Services
- Azure OpenAI Services (ChatGPT)
- Azure Storage Account
- Azure Data Lake
- Azure Databricks

In addition, the data connections to the external data sources and to the target systems will be set up. If necessary, the customer's local network will be connected to the Azure network to establish the data connections. An Azure subscription with empty Azure resource groups, in which the developers are assigned the role of Owner, is required on the customer's side. The Azure resources are created using scripts, preferably Terraform. The implemented Azure infrastructure of the solution is presented and delivered to the customer so that it can be integrated into other systems and processes, such as cost control or monitoring.





Phase 4

## Adoption

AI Kickstart is based on a proven approach that enables a clear separation of data structures and data processing procedures. This eliminates the need for new process development and makes it easy to extend the functionality of the solution. Proven processing methods are already available for common source systems such as databases, Dynamics365, files or web interfaces. These can be adapted to specific customer requirements if necessary.

Based on the results of phase 2, the data model of the AI solution will be implemented in this phase of the Kickstart project and complemented by the data processing processes.

This will be the basis for the development, implementation and deployment of the first use cases to the customer. Based on the experience gained, new ideas and requirements are developed and documented in further use cases.

The implementation of these new requirements will take place within the existing budget and can, if necessary, be carried out in a separate project. Based on the created solution and the customer's specific vision in the field of artificial intelligence, an outlook on future development steps and possible optimisation potentials will be provided.

### Limitations

The AI Kickstart is an executable, tailor-made solution that represents an added value for the customer. However, it is not a comprehensive solution. It does not cover a number of aspects of a full solution. A fully customised solution includes features like:

- Multi-instance system, development, integration/ test, quality, production
- Release management
- Disaster recovery
- Active monitoring and alerts
- Integration with version control, e.g. Azure DevOps

The Kickstart solution is open in its extensibility. It can be expanded in the future to include other data analysis topics and additional functionality. This means that Kickstart can gradually evolve into a complete solution. zu einer vollständigen Lösung entwickelt werden.

### Results

The AI Kickstart enables you to implement a pre-defined use case and evaluate the benefits and potential applications.

We also promote understanding of AI projects and the transition to data-driven decisions. We can help you develop concrete solutions and integrate them into a step-by-step planning process. This will give you a better idea of the next steps in your digital transformation.

On request, we can also provide you with a rough cost estimate for the next steps.

## CONTACT US

Go to:  
[www.softwareone.com](http://www.softwareone.com)

DE  
phone: +49 341 2568 2368  
email: [info.de@softwareone.com](mailto:info.de@softwareone.com)

AT  
phone: +43 1 878 10 0  
email: [info.at@softwareone.com](mailto:info.at@softwareone.com)

CH  
phone: +41 844 44 55 44  
email: [info.ch@softwareone.com](mailto:info.ch@softwareone.com)



Copyright © 2023 by SoftwareOne AG, Riedenmatt 4, CH-6370 Stans, Switzerland. All rights reserved.  
SoftwareOne is a trademark of SoftwareOne AG. All other trademarks are the property of their respective owners.  
SoftwareOne does not guarantee that the information provided is up-to-date, complete or correct. Images from Adobe Stock and Getty Images.